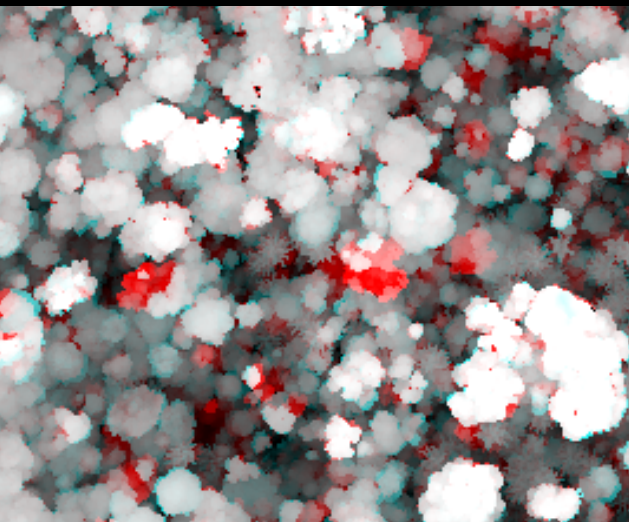


Mudanças Climáticas: Exemplos no Brasil



Douglas Morton
NASA



20.09.2017



NASA

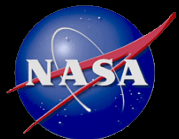
- Niels Andela
- Praveen Noojipady
- Anika Halota
- Bruce Cook

University of Maryland

- Danielle Rappaport
- Veronika Leitold

US Forest Service

- Michael Keller



Embrapa

- Edson Bolfe
- Marcos Longo
- Maiza Nara dos Santos
- Ekena Pinagé
- Rosa Pabón
- Mateus Batistella

University of California, Irvine

- Jim Randerson
- Yang Chen



Resumo

- Situação atual: a perspectiva da NASA
- Queimadas: global e regional
- Perguntas e Discussão

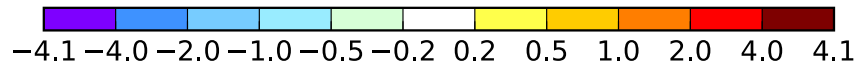
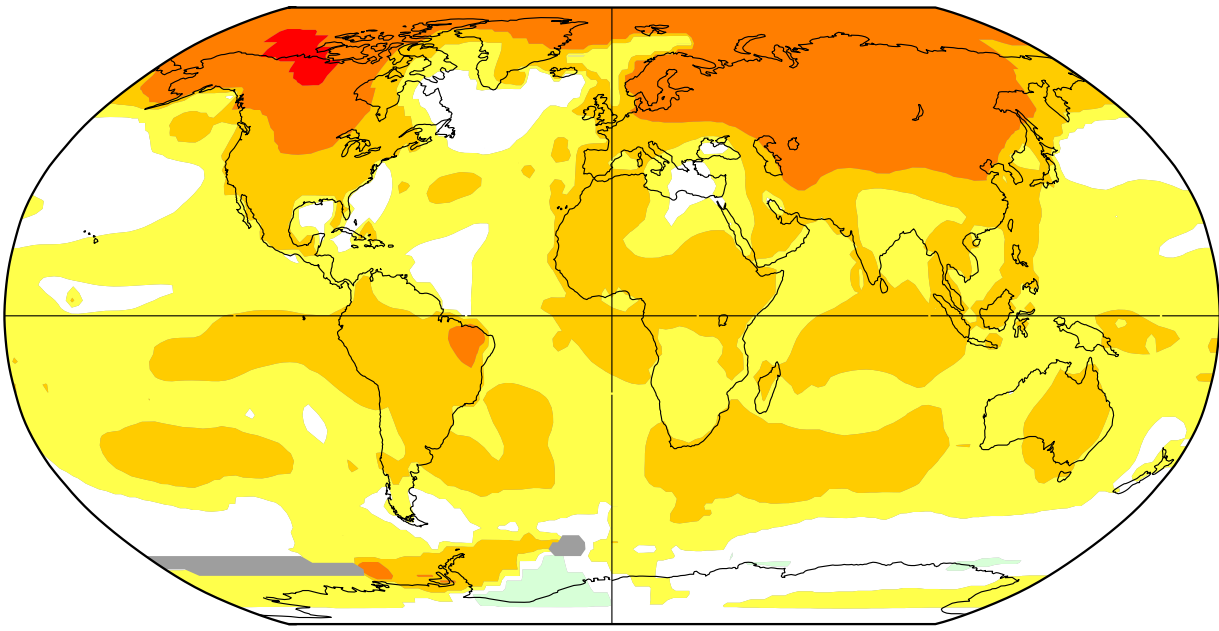


Temperatura

Nov-Apr 1984-2016

L-OTI(°C) Anomaly vs 1951-1980

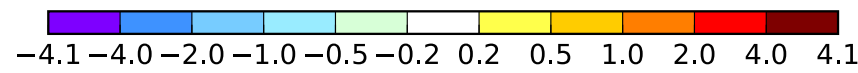
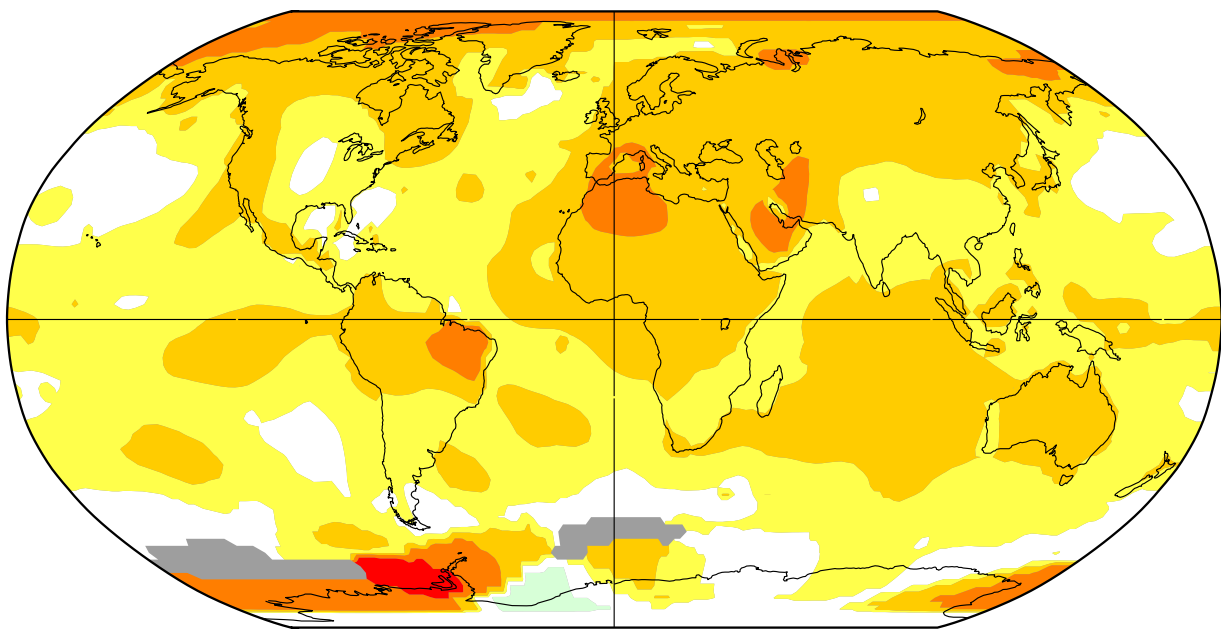
0.51



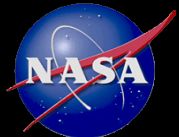
May-Oct 1984-2016

L-OTI(°C) Anomaly vs 1951-1980

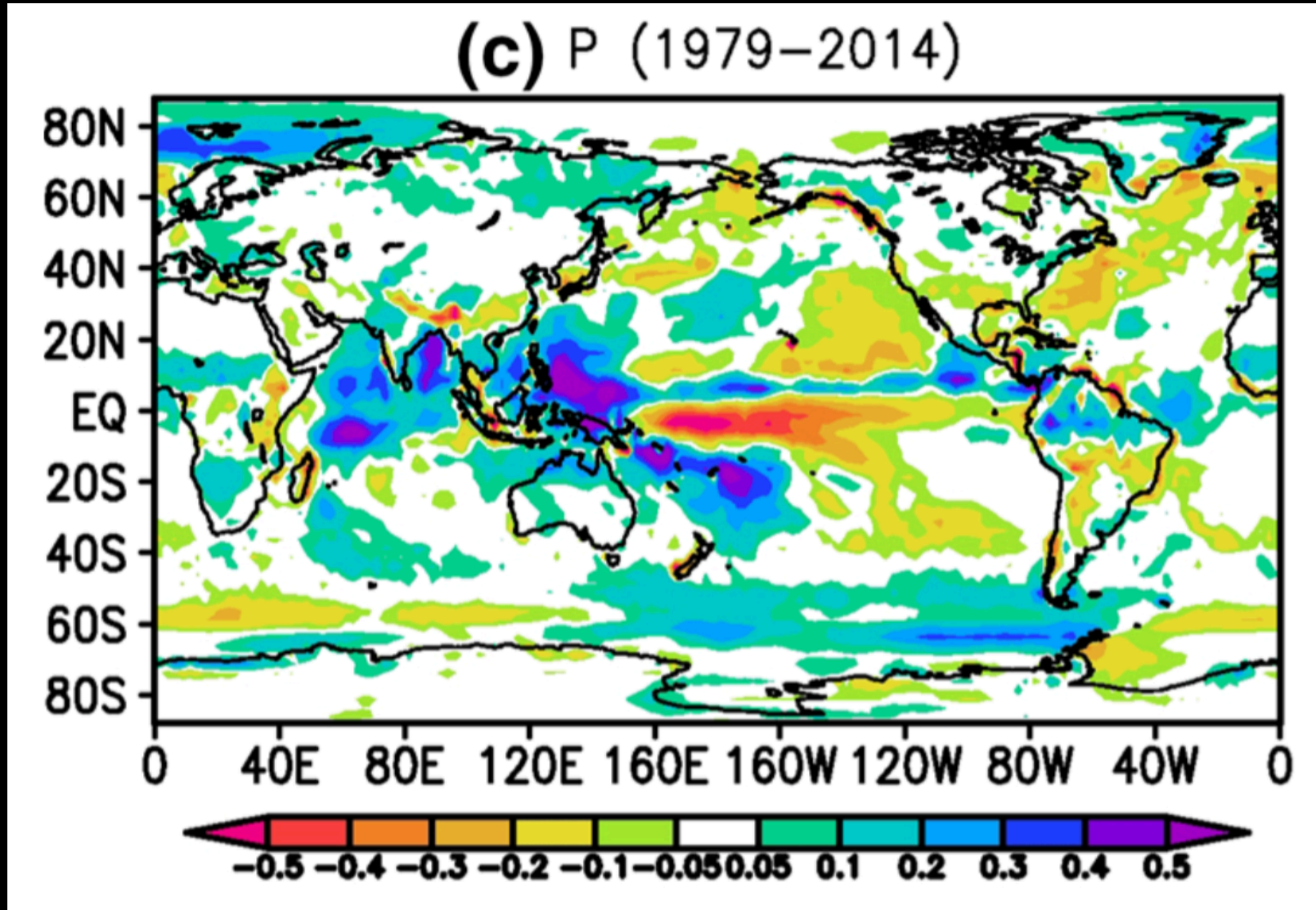
0.49



Source: GISTEMP
<https://data.giss.nasa.gov/gistemp/>

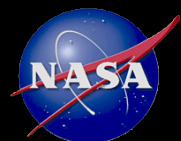


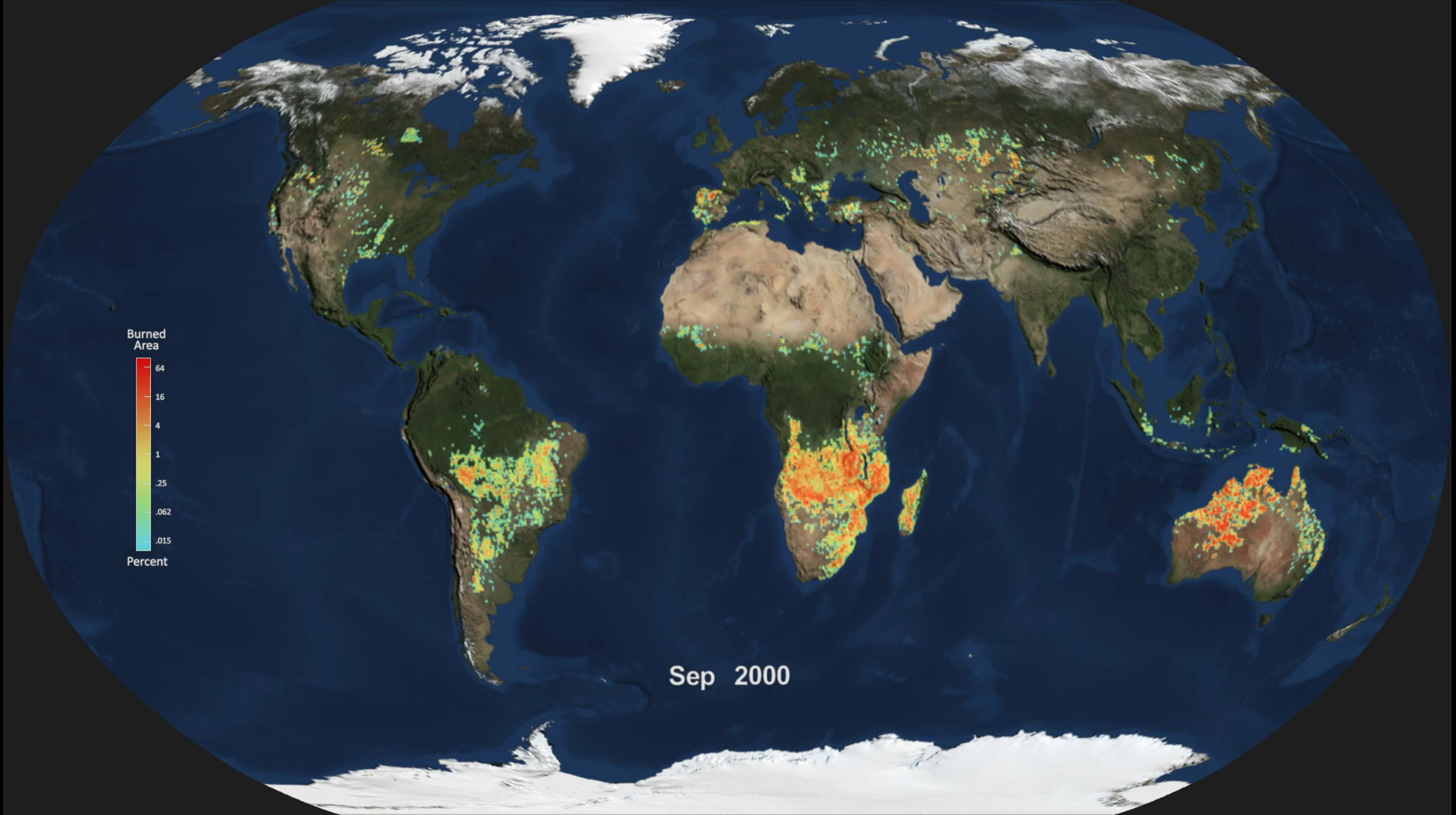
Precipitação



Jan 2002

Terrestrial Water Storage Anomaly (cm.)



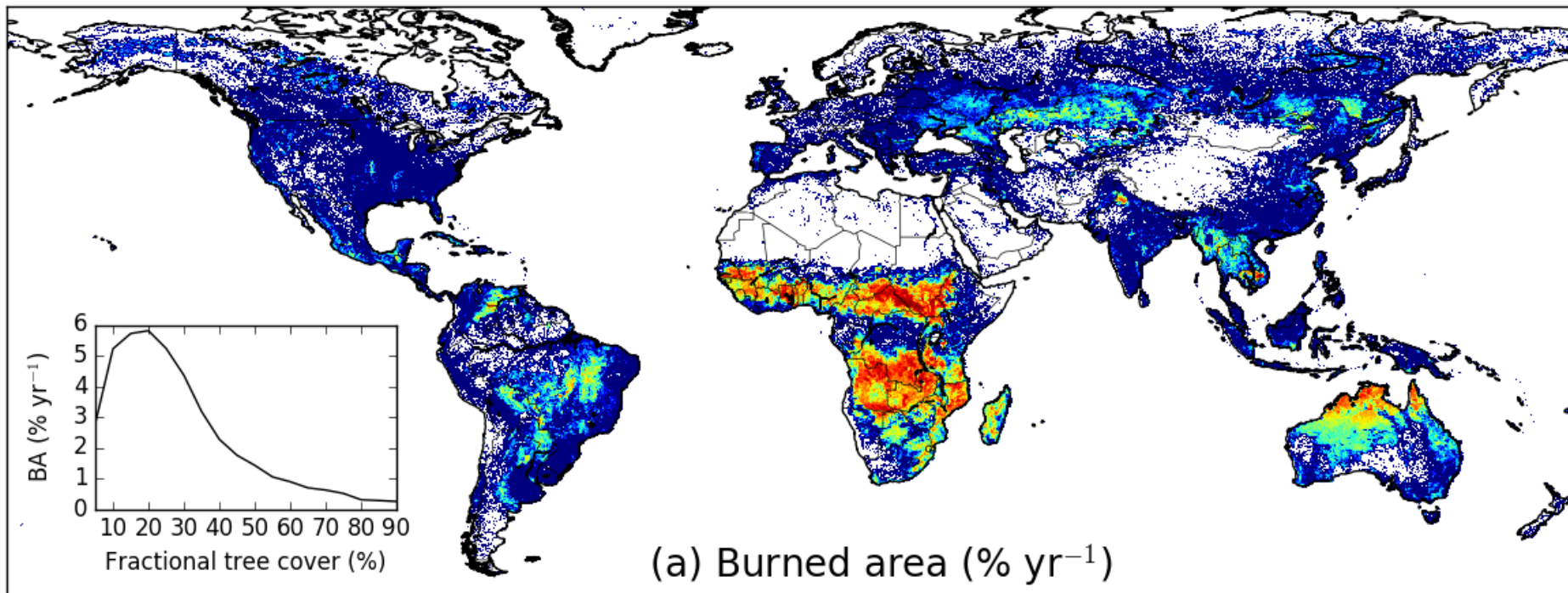


Sep 2000

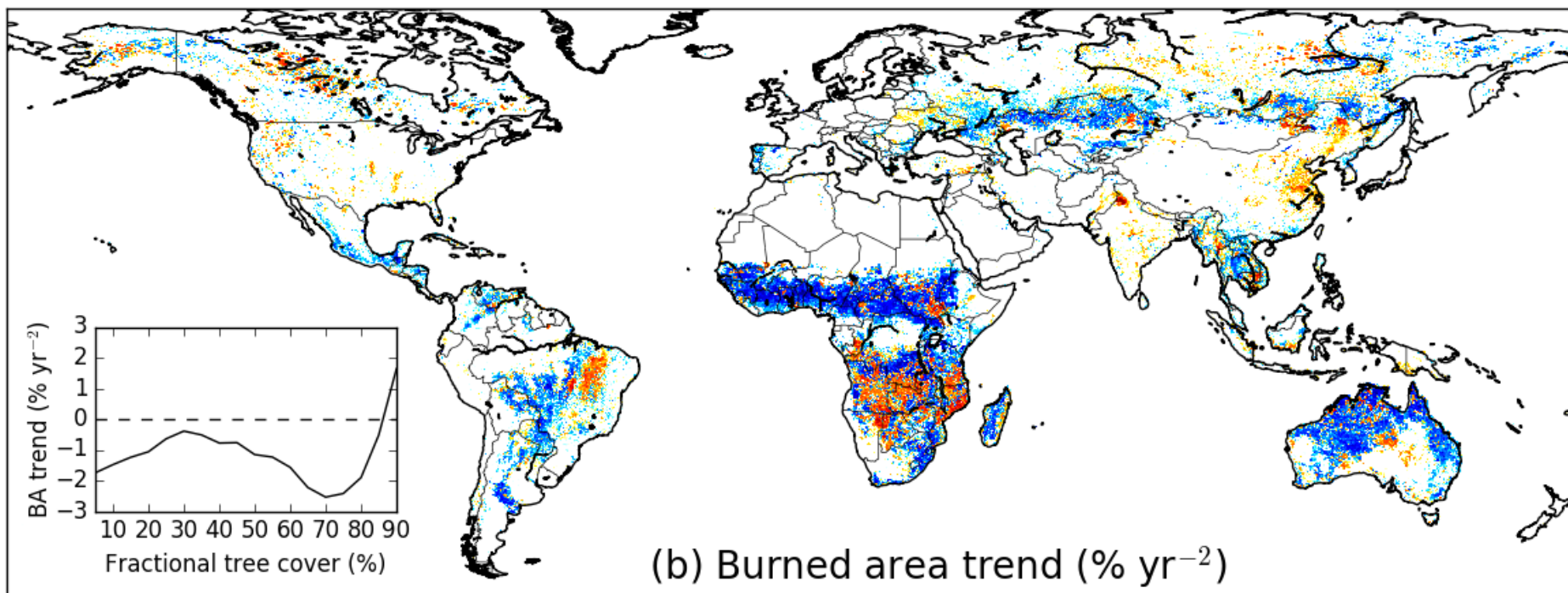
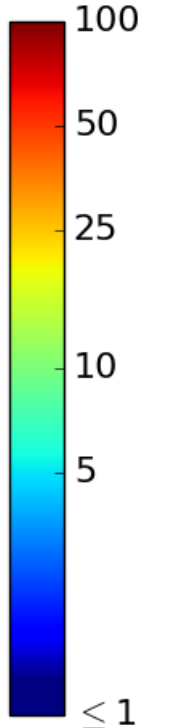


GFED Burned Area

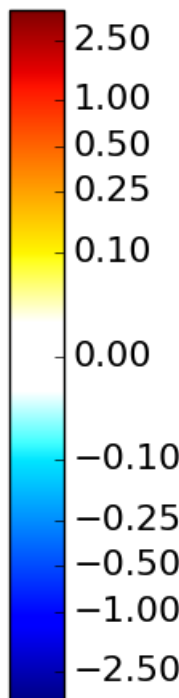
svs.gsfc.nasa.gov



(a) Burned area (% yr⁻¹)

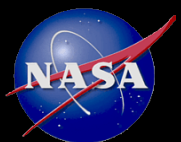
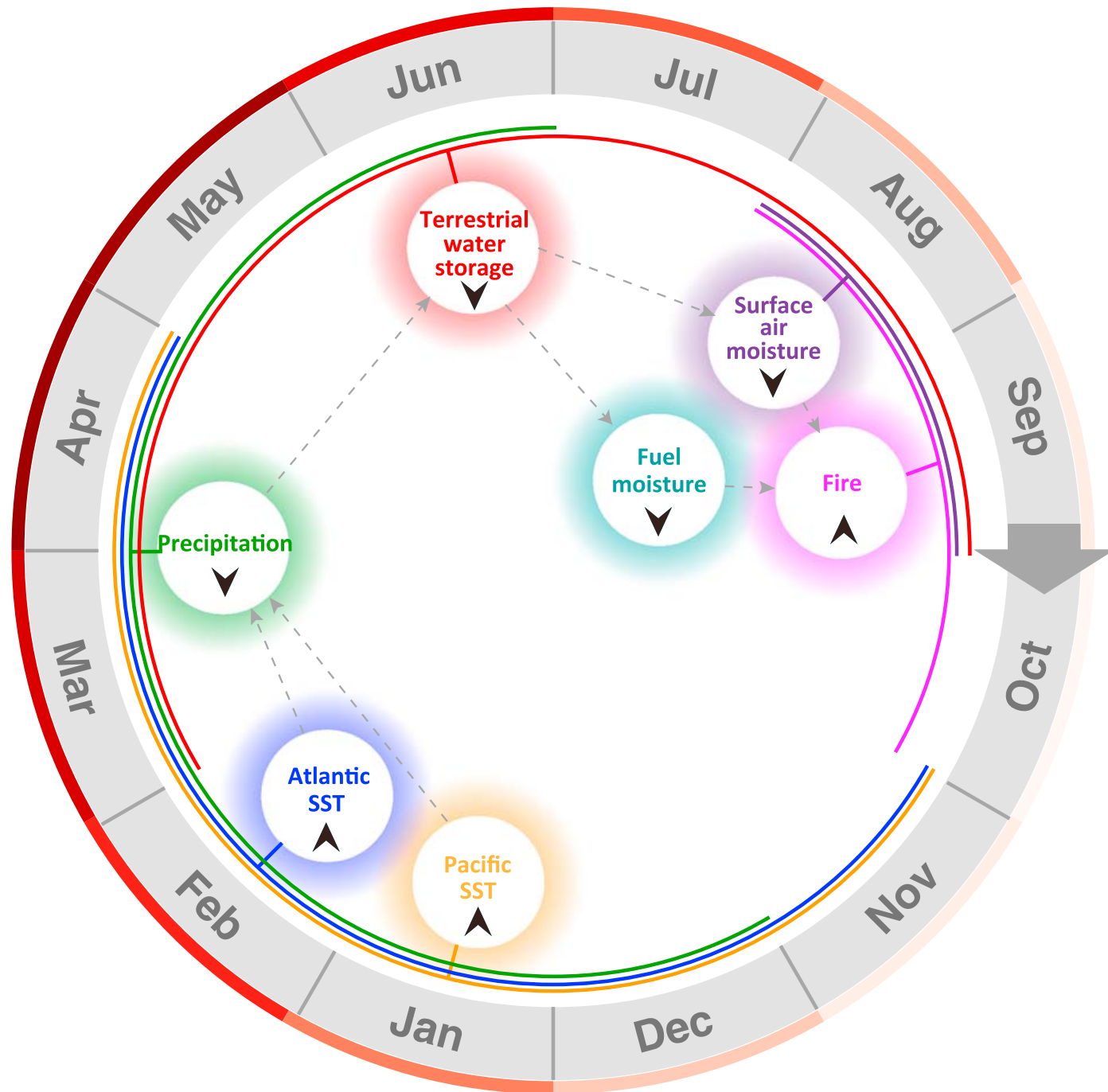


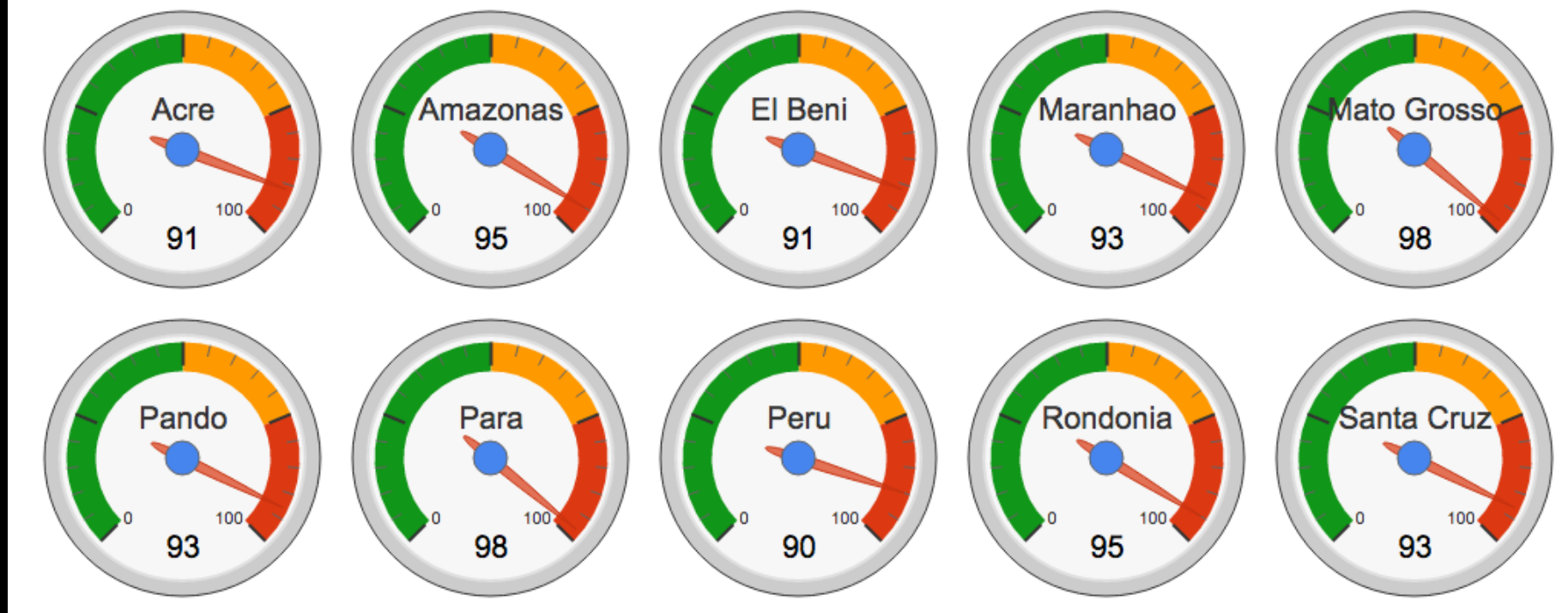
(b) Burned area trend (% yr⁻²)



Andela et al., 2017

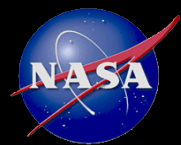
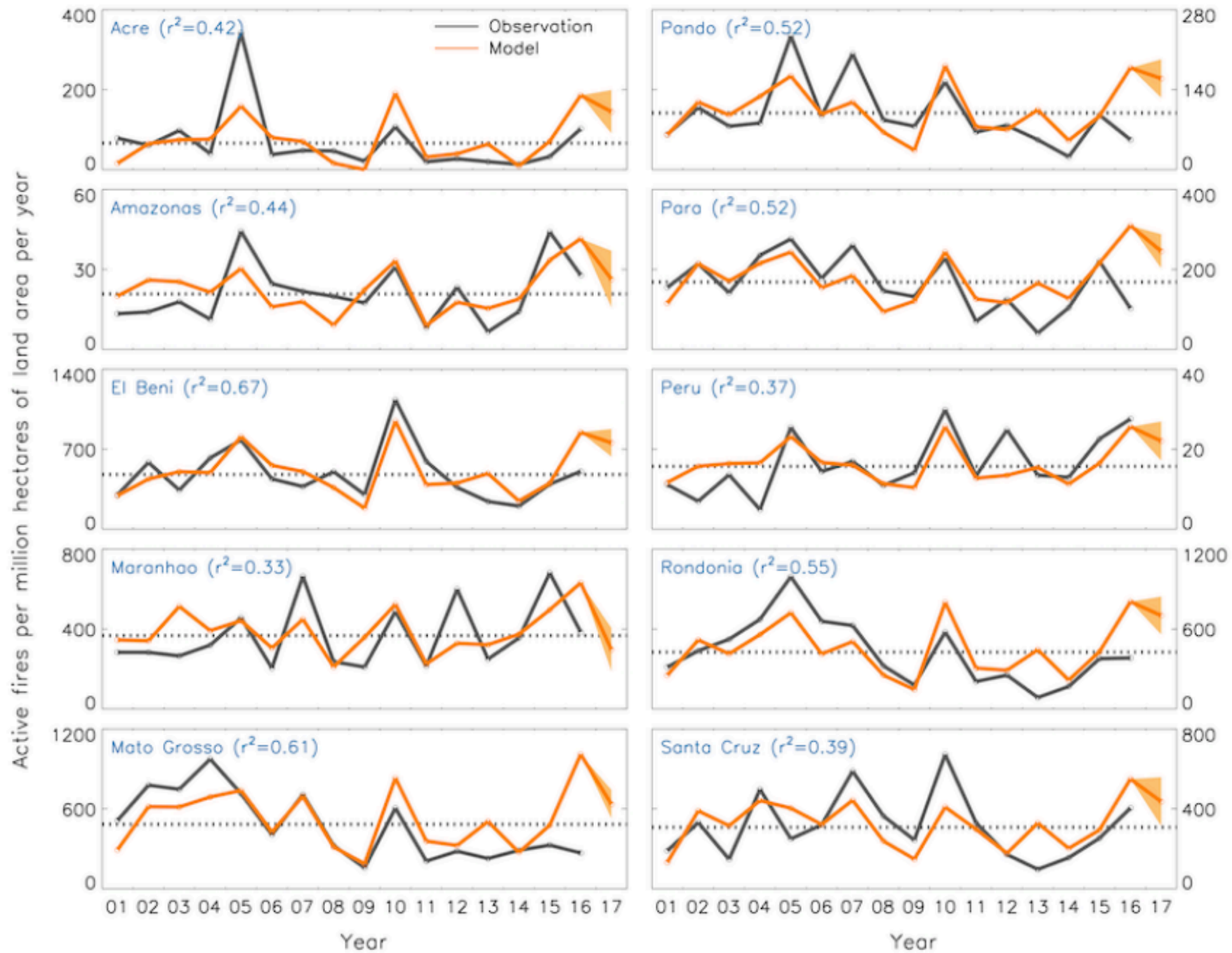


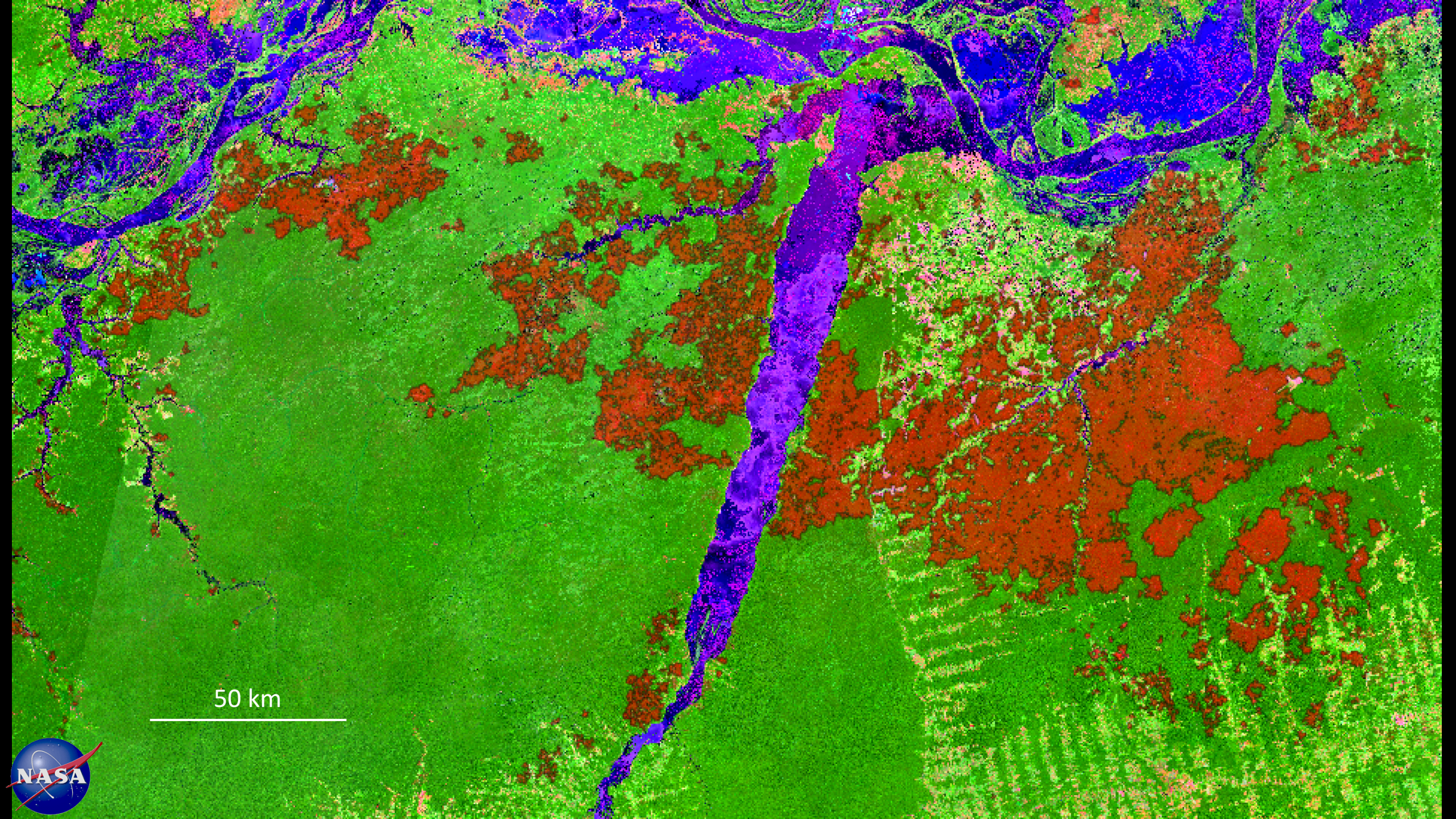




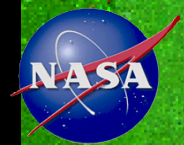
Previsão 2016 Para o Período Severo de Queimadas na Amazônia

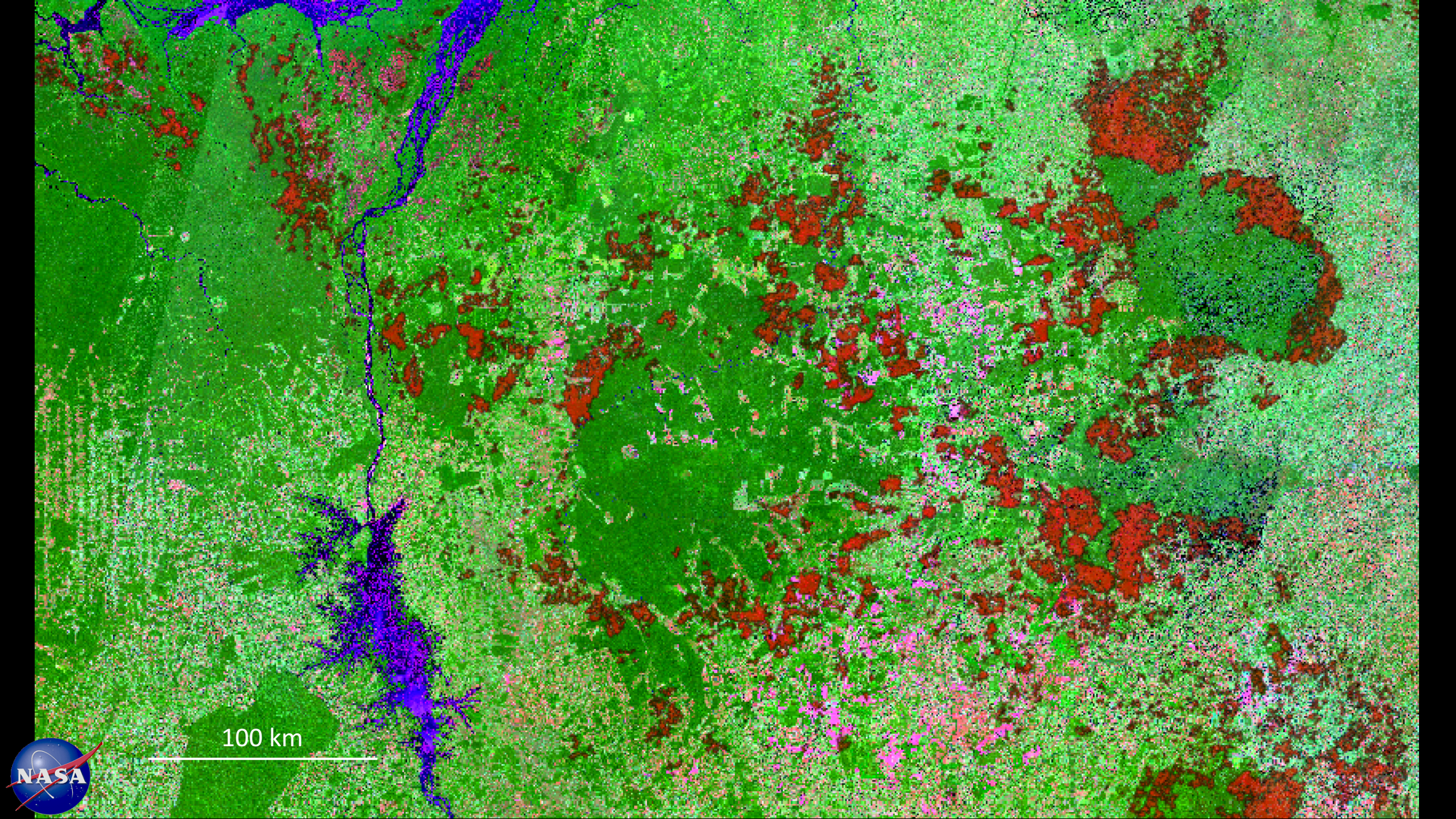




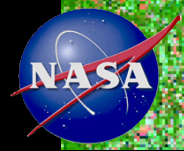


50 km





100 km

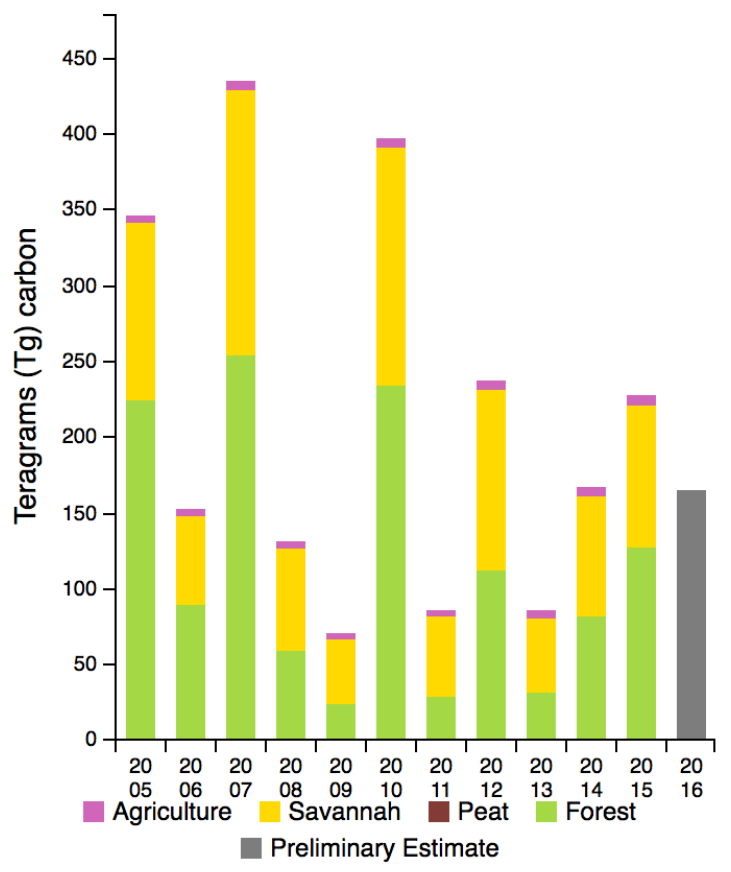


ADD A CHART

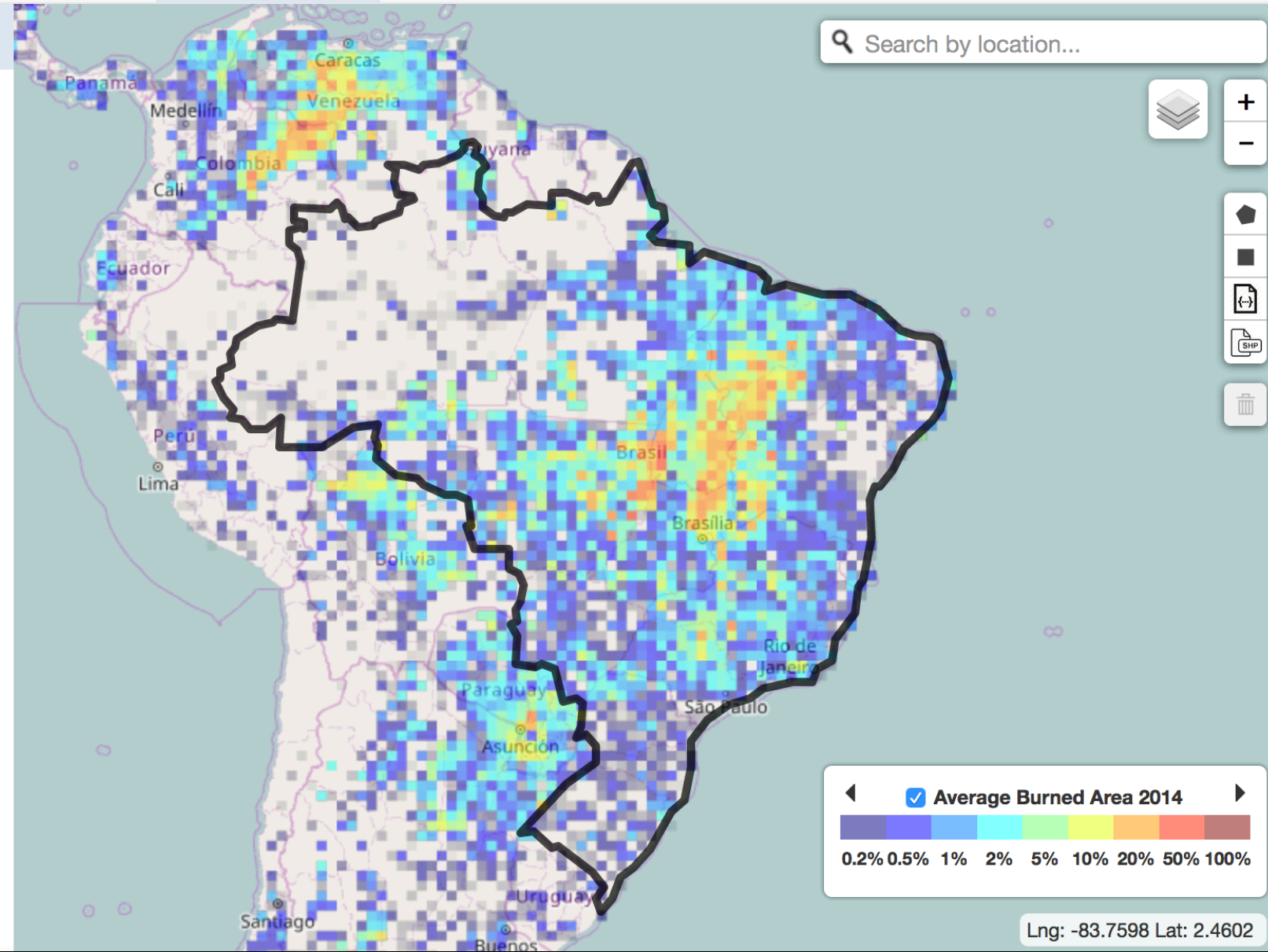
■ = || ■ ×

Search by location...

Annual Emissions: Brazil



Estimate of carbon emissions by source from 2005 to 2016. ($r^2 = 0.77$)



Average Burned Area 2014

0.2% 0.5% 1% 2% 5% 10% 20% 50% 100%

Lng: -83.7598 Lat: 2.4602





Perguntas?

douglas.morton@nasa.gov

<http://globalfiredata.org>

<http://gliht.gsfc.nasa.gov>

[http://mapas.cnpm.embrapa.br/
paisagenssustentaveis/](http://mapas.cnpm.embrapa.br/paisagenssustentaveis/)