



Black Marble: Using nighttime lights to save lives & critical infrastructure...

Black Marble provides unparalleled global nighttime lights data, delivering critical insights to enhance preparedness, infrastructure resilience, and situational awareness

Widespread Adoption

>100m
scenes downloaded

Timely & Accurate Data

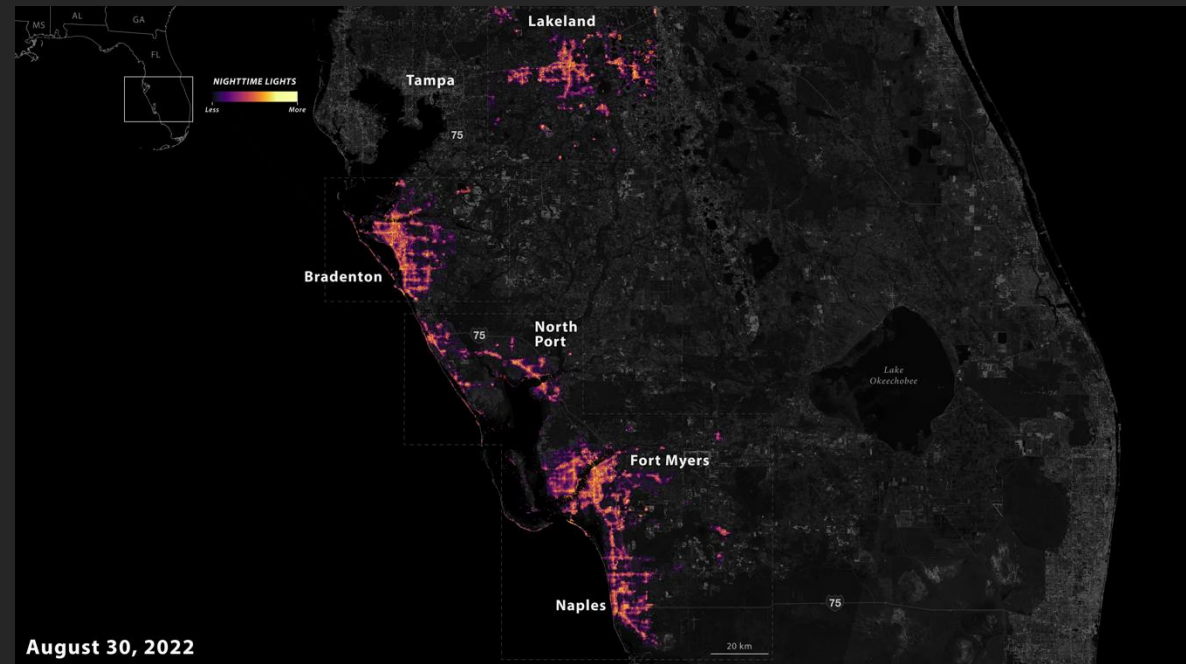
Observations available within

3 hours



Helping to detect power outages and lifeline disruptions from disasters, cyberattacks, and extreme weather

Supporting tracking of infrastructure status, recovery, and corridor activity for risk-informed planning



August 30, 2022

Power outages caused by Hurricane Ian were captured by Black Marble on September 29, 2022, in Southwestern Florida. Ian brought catastrophic storm surge, wind, and flooding, disrupting critical infrastructure and leaving over three million customers without power across the Sunshine State.